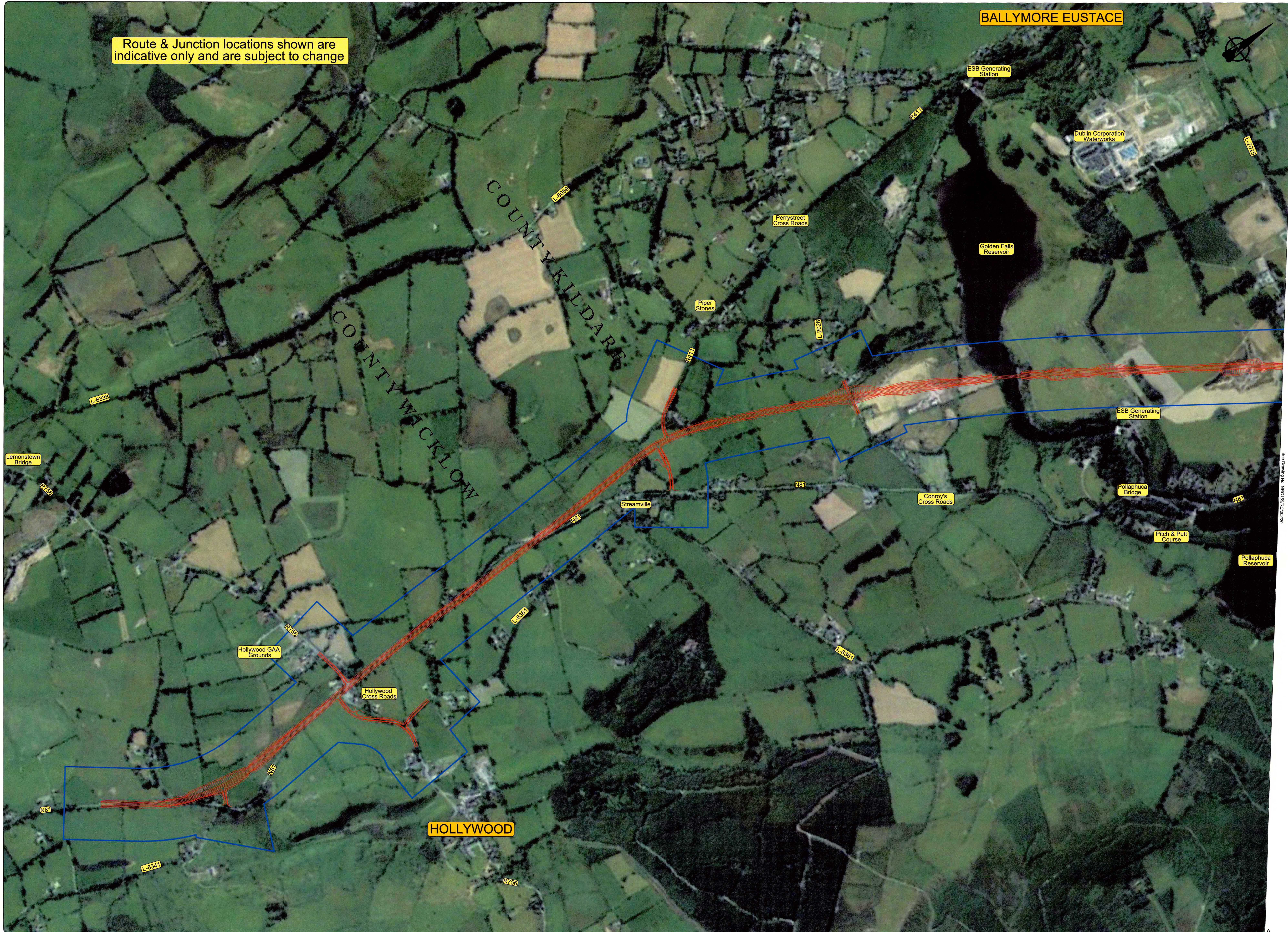


Route & Junction locations shown are indicative only and are subject to change

BALLYMORE EUSTACE



A

See Drawing No. NRO159/RC/202/19

Plan

**Legend:**

Preferred Route Corridor

©Ordnance Survey Ireland. All rights reserved.  
Licence Number 2016/28/CCMA/Kildare County Council.

**ENGINEERS IRELAND**  
ACCREDITED EMPLOYER

NSAI Certified

**KILDARE nro**  
NATIONAL ROADS OFFICE  
Maudlin, Naas, Co. Kildare, Ireland  
Tel: +353-45-988900, Fax: +353-45-872845, e-mail: kco@kildarenro.com

**NALL MORRISSEY**  
DIRECTOR OF SERVICES  
Roads, Transportation & Public Safety

**DAVID O'GRADY** BE MSc HDip CEng MIE  
ACTING SENIOR ENGINEER

Suffix	Initials	Date	Description
1		May, '16	Published Route Corridor
REVISIONS			

STAGE	PROJECT <b>N81Hollywood Cross to Tallaght Road Improvement Scheme</b>	Scale: 1:5,000 @ A0
PRELIMINARY	DRAWING <b>Preferred Route Corridor Bing Aerial Mapping</b>	Date: May, 2016
N.R.A. APPROVAL		Drawn by: B.K.
TENDER		Checked: A.K.
CONTRACT		Revised: 0
Drawing No. <b>NRO159/RC/202/19</b>   SHEET <b>1 - 6</b>		